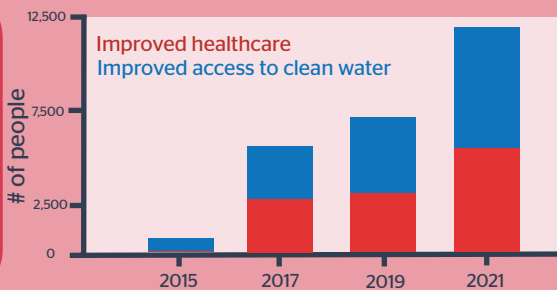


# Keo Seima Wildlife Sanctuary REDD+ Project

## IMPACT OVER TIME



### HEALTH & WELLBEING



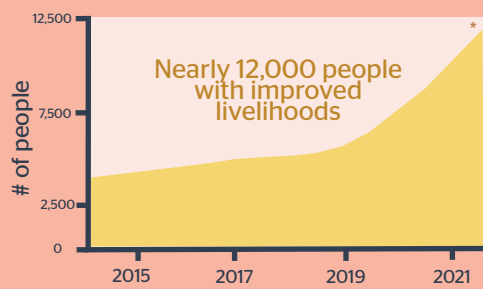
500 residents in 5 indigenous villages benefited from mobile healthcare clinics in 2021

#### SDG

Target: 6.1  
Safe and affordable drinking water for all

Target: 3.8  
Achieve universal healthcare

### ECONOMY



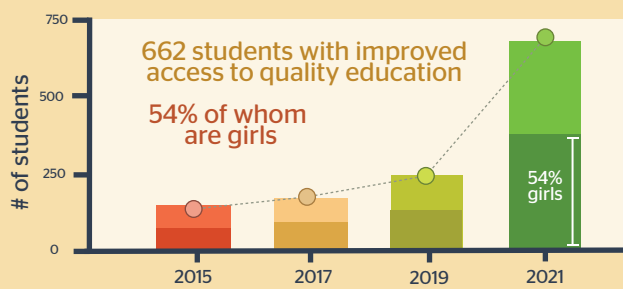
1,500 wildlife-friendly farmers benefiting from premium prices for organic jasmine rice

>11,000kg IBIS rice sold at 30% premium in 2020-2021\*

#### SDG

Target: 2.3  
Double the productivity and incomes of small-scale food producers

### EDUCATION



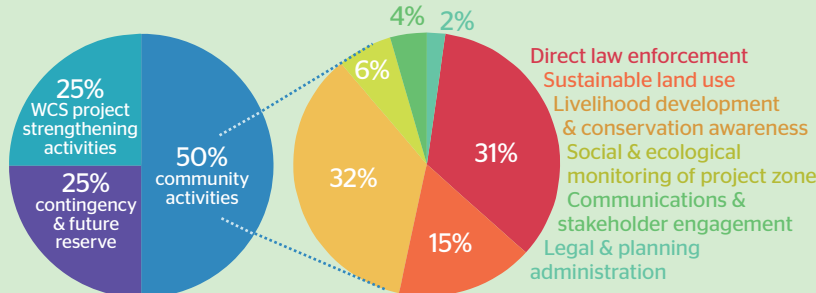
#### SDG

Target 4.1  
Free primary and secondary education

Target 4.a  
Build and upgrade safe and inclusive schools

### COMMUNITY BENEFITS SHARING

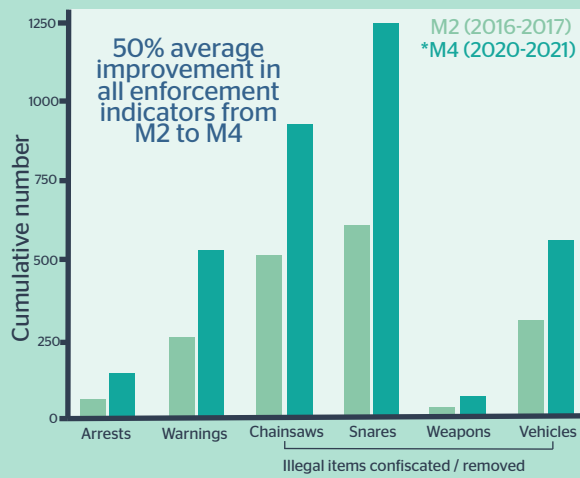
>\$3.6 million allocated to community activities in 3 years (2018 - 2020)



#### SDG

Target: 15b  
Mobilize significant resources to finance sustainable forest management and provide adequate incentives to developing countries

### FOREST GOVERNANCE



665 arrests & warnings  
925 chainsaws  
1,247 snares removed  
617 vehicles & weapons confiscated

#### SDG

Target: 15.7  
Eliminate poaching & trafficking of protected species

### LAND RIGHTS



#### SDG

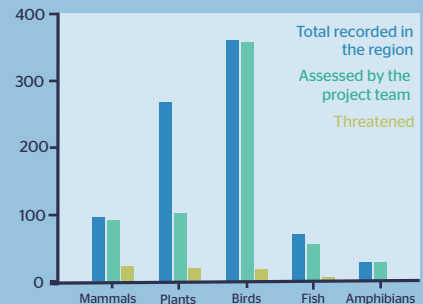
Target: 5.a  
Equal rights to economic resources, property ownership & financial resources

Target: 15.9  
Integrate ecosystem and biodiversity into governmental planning

### BIODIVERSITY



Improved conservation measures, reducing threats and improving landscape connectivity for more than 60 IUCN Red List animal species\*.

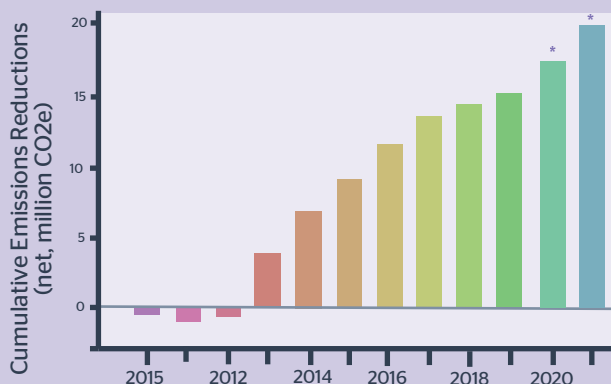


Biodiversity monitoring resulted in the discovery of 20 species new to science\*.

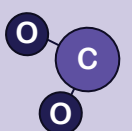
#### SDG

Target: 15.5  
Protect biodiversity and natural habitats

### CLIMATE CHANGE



>20,000,000 avoided CO2e emissions



#### SDG

Target: 13a  
Implement the UN Framework on the Convention on Climate Change

\*verification in process

Note: 2010-2019 data: CCB verified reports. 2020-2021 data: CCB verification in process; asterisk (\*) highlights data from this report. 2022 data: provided by Wildlife Conservation Society, subject to CCB and WCS verification.